

# OTELLO

*Musique de Rossini*

*Arrangé*

*pour Harpe & Piano*

*avec Accompagnement*

*de Flûte ou Violon et Violoncelle ad libitum*

*Par*

**N. CH. BOCHSA Fils.**

Livraison

Prix 10<sup>f</sup>. 50<sup>c</sup>.

*Propriété des Éditeurs.*

*Déposé à la Direction.*

**A PARIS**

*aux Troubadours.*

*Chef d'œuvre DUFAY et DUBOIS, Éditeurs, M<sup>rs</sup> de Musique, Succ<sup>rs</sup> de LÉLU et BOCHSA père, Rue du Gros-chenet, N<sup>o</sup> 2.*



## VIOLONCELLO

N<sup>o</sup> 1.  
AIRS D OTELLO

Marcia

Moderato

6  
p  
f  
piz.  
pp  
f  
piz.  
p  
arco  
ff  
dim.  
ff

N<sup>o</sup> 2.  
ANDANTE  
ESPRESSO

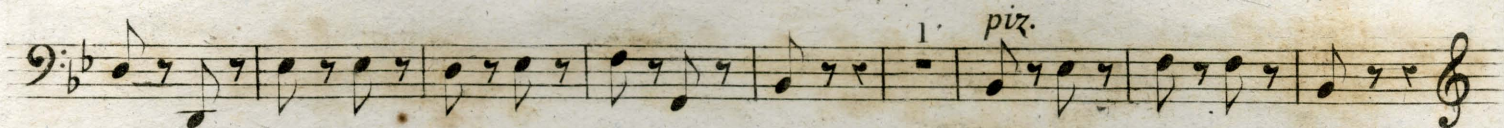
Assisa a pie d'un salice (ROMANCE)

1  
f  
pp  
dol  
solo  
1

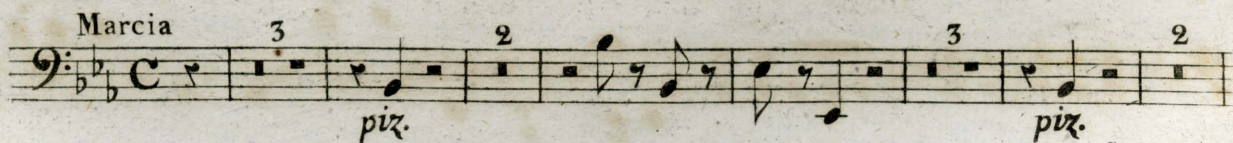


# VIOLONCELLO

3



Nº 3.  
MAESTOSO





## VIOLONCELLO

Nº 4.  
MAESTOSO  
POLO LENTO

Tu certa l'anima 8 (QUINTETTO)

*f* *p* *pp* *pp* *pp* *ritard*

Nº 5.  
ANDANTE  
GRAZIOSO

Di parli l'amore (TRIO)

*piz.* *arco* *piz.* *arco* *piz.* *cres* *f* *p* *pp* *cres* *p* *dim.*

ALLEGRO

*pp*



# VIOLONCELLO

5

Violoncello musical score page 5. The page contains ten staves of music in bass clef, with a key signature of one flat (B-flat). The notation includes various musical symbols such as notes, rests, and dynamic markings.

Staff 1: Starts with a triplet of eighth notes, followed by a crescendo (cres.) and a fortissimo (f) marking. The staff ends with a fermata over a whole note.

Staff 2: Continues the melodic line with various note values and rests.

Staff 3: Features a piano (p) marking, a crescendo (cres.), and a first ending bracket (1) leading to a triplet of eighth notes.

Staff 4: Includes a second ending bracket (2) and an 'Animato' tempo marking. The staff ends with a 'ten' (tension) marking over a whole note.

Staff 5: Starts with a crescendo (cres.) and a fortissimo (ff) marking. The staff ends with a piano (p) marking.

Staff 6: Features a triplet of eighth notes, a fortissimo (ff) marking, and a piano (p) marking.

Staff 7: Includes an 'Animato' tempo marking and a fortissimo (f) marking. The staff ends with a fermata over a whole note.

Staff 8: Continues the melodic line with various note values and rests.

Staff 9: Features a fortissimo (ff) marking and a piano (p) marking.

Staff 10: Includes a 'ten' (tension) marking and ends with a double bar line.











